

HOLMDEL TOWNSHIP NEWSLETTER



HOLMDEL TOWNSHIP

• **Visit our website at:**

www.holmdeltownship-nj.com

• **E-mail us at:**

info@holmdeltownship-nj.com

Township Holiday Closing ~ 2011

- Monday ~ May 30
- Monday ~ July 4
- Monday ~ September 5
- Monday ~ October 10
- Friday ~ November 11
- Thursday ~ November 24
- Friday ~ November 25
- Friday ~ December 23
- Monday ~ December 26

In this Issue

| | <u>Page</u> |
|------------------------|-------------|
| Message from the Mayor | 1-2 |
| Township News | 2 |
| Township Engineer | 3 |
| Police Department | 4 |
| Tax Collector | 5 |
| Election Information | 5 |
| Parks & Recreation | 6-7 |
| Recycling | 8 |
| Green Team Committee | 9 |
| Shade Tree Commission | 10 |
| First Aid | 10 |
| Storm Water Management | 11 |
| Holmdel Alliance | 12 |
| Municipal Information | 13 |

Message from the Mayor and Township

Over the past several years Holmdel has maintained a conservative but progressive financial practice. This practice continues to serve the Township well during this most challenging fiscal period. So while preparing the Township's annual budget this year, we continued to follow those practices.

The 2011 budget is based on a premise of maintaining basic services in a challenging economic environment. Holmdel has continued to move forward during this past year when most communities were forced to take a step back. The Governing Body continues to manage our way through a daunting fiscal obstacle course. We are proud to say that our Town has continued to provide quality services to residents while State Aid to the Township has dwindled. Some could argue that having less State aid has a direct negative impact on local services while others could argue that being less dependent on State revenues places us in a more predictable decision making position to provide those same services. Either way you look at it, Holmdel has endured these State Aid cuts and increased pension payments and handled our budgets with fiscal conservatism.

While we remain in a position of not expanding our service capabilities, we continue to take steps to get the most out of existing services. During challenging fiscal periods opportunities emerge for making government more efficient. It's times like this that cause most administrations to no longer accept the "same old practice" as the norm and challenge people to ask the simple question-Why? The question "why" takes on new meaning when we look at how we operate various town departments. Over the past couple of years, we asked "why?" and the following departments were re-evaluated:

Department of Public Works: We continue to review the Department of Public Works operations to determine if the current design will allow the Town to maximize the potential of the department. We are working on updating policies and procedures so all Holmdel residents will have a better understanding of the department's function. We are looking to place schedules/locations of leaf and brush on line so residents can have a better idea of when the DPW is coming to their neighborhood. We are assessing the snow removal policies and the private contractors' practices to better serve our residents.

Board of Health: We have chosen to outsource the office of Board of Health to Monmouth County, in a shared services agreement saving the Township a substantial amount of money and increasing services to our residents. While a registrar will remain at Town Hall for your marriage licenses, dog licenses etc. the bulk of what is covered by the BOH will now be shared with Monmouth County and surrounding communities.

Police Department: We are working with Chief Mioduszewski to review and realign some of the functions of the police department, while still allowing for the programs the department provides and being proactive in keeping our community safe.

Construction and Zoning Departments: We have restructured these departments to enhance customer service and save taxpayer dollars. We have entered into a shared service agreement with Hazlet and now are looking to expand that shared service with another neighboring community. We are also going "electronic" allowing residents to do most of the processes of permitting on line, from applications to scheduling appointments. We hope to have this program up and running in the next few months.

(Mayor's article continued on page 2)

(Mayor's article continued)

Finance: We are appraising the payroll and accounting department and looking into outsourcing some of this work and moving into an electronic system. This should allow for our finance clerks to handle other financial matters more quickly, it will also allow for up to the minute reports on overtime and staffing.

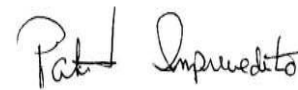
We will continue to work with our counterparts both at the Bayshore Council of Mayors and the Board of Education in exploring shared services and collaborating on purchases. This has proven very successful in the past in both efficiency and cost savings, so we will continue to explore every opportunity and leave no stone unturned.

While progress has been made during this past year in evaluating each of the ideas describe above, it is never too late to further consider these and other options on how we could assess local government. If you have any thoughts or perhaps saw something in another community that you think may work here, please feel free to call us. You can reach us by phone or email at the Township Clerk's office, at 732-946-2820 ext. 1212 or info@holmdeltownship-nj.com

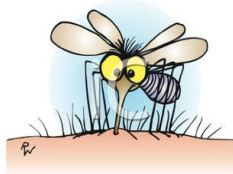
The Memorial Day ceremony will be held at Town Hall on May 30th. Join us as we honor our fallen heroes. To keep informed on all issues and events in the Town, please log on to our website at www.holmdeltownship-nj.com. and sign up for "e-alerts."

This year is already moving past us very quickly, but we are always hard at work on your behalf. We will continue to work for you and with you to ensure Holmdel remains the place where you can live and raise your children and even your children's children. Happy Spring, we know we are all waiting for some beautiful warm weather, hopefully this May issue will bring it with it's delivery. Enjoy, and please remember we are here to serve you, so please feel free to call us with any issue you may have, big or small.

On Behalf of the Township Committee



Mayor, Patrick Impreveduto



MOSQUITO CONTROL

Every year the Monmouth County Mosquito Commission applies pesticides from aircraft to control mosquitoes over portions of Holmdel Township. The only pesticides used are those registered by the NJDEP and USEPA and recommended by the New Jersey Agricultural Experiment Stations for the control of adult mosquitoes. Areas being treated are only those found to have a significantly high mosquito population and may present either a public health nuisance or disease factor.

For the most updated information and maps of all scheduled operations, please check the Commission's website at www.visitmonmouth.com/mosquito. Also, the spray hotline telephone number is 732-578-1600.

The Commission conducts aerial surveillance and treatment program from April 1, 2011 through November 30, 2011.

LOST & FOUND

Found at Town Hall ~ (2) pieces of jewelry. Please contact the clerk's office , 732-946-2820, extension 1212 for further information.

MEMORIAL DAY CELEBRATION

Help us honor our patriotic hero's during our Annual Memorial Day Ceremony being held on Monday , May 30th at 10:30am in front of Town Hall.

ENGINEER'S CORNER

Township Engineer, Edward Broberg, P.E., provides the following information concerning ongoing engineering & construction projects

2009 Capital Improvement Program Nears Completion

The 2009 Capital Improvement Program involved a variety of projects throughout the town, including Ashley Drive, Country Woods Subdivision, Old Mill Lane, Gailwood Terrace, and the Sweetbriar/Wildhedge Subdivision and several other smaller projects. It is expected to be totally complete by the end of May.

2010 Capital Improvement Program Awarded

The 2010 Capital Improvement Program was recently awarded to Lucas Construction by the Township Committee. The project involves pavement repairs on both interior streets and collector roads, crack sealing, curb replacement in Country Woods and several other locations, and minor drainage work. Originally, the project included the reconstruction of Manee Place, but this has been delayed due to the possibility of installing the sewers in that area. The work started in late April and will take approximately 4 months to complete.

Shared Services

The 2010 Capital Improvement Program involves work for both the Township and the Board of Education. It is an example of shared services where the objective is to reduce costs associated with capital improvements. Generally, a larger project results in lower overall costs for both agencies.

Bethany Road/Holmdel Road Intersection Delayed

The Bethany Road/Holmdel Road intersection improvement is a County project. It was awarded several months ago and has not started due to required utility relocations. The relocations are nearly complete and it is anticipated that major construction on the project will commence in May or June.

Township Receives State Aid Funding

The Township of Holmdel recently received \$170,000 for the improvement of Bethany Road between the Garden State Parkway and Line Road. Hazlet Township also received a State Aid Grant and a cooperative project was initiated as described below.

Cooperative Improvement Program

The Townships of Holmdel and Hazlet recently agreed to embark on a cooperative program for the improvement of Bethany Road between the Garden State Park-

way and Line Road. Each municipality received a sizeable State Aid Grant to improve their section of the road. Bethany Road in this area is the municipal boundary so a cooperative program is the most efficient and cost effective way to undertake the improvements. It was agreed that Hazlet Township would act as the lead agency with Holmdel providing input and approval at various stages. The project is expected to be bid in June or July with construction starting during the summer.

Holmdel Completes Phase I Energy Efficiency Improvements

The Township recently completed lighting improvements at the municipal complex using a 2010 Energy Efficiency Grant. More recently, the Township applied for a 2011 Energy Efficiency Grant for Public Works, the Senior Center and possibly the Pool Club. We are awaiting a response.

Laurel Avenue Improvements Completed

The widening of Laurel Avenue near the new TD Bank was recently completed. These improvements added travel lanes on Laurel Avenue in front of the bank and provided access to the bank from the existing traffic signal.

Open Space Additions

As part of the TD Bank approval process, the Township utilized a developer contribution for the acquisition of 7 acres of open space behind the bank. That property is now under Township jurisdiction and is part of our Open Space Inventory. In addition, the bank provided parking spaces and a pedestrian bridge as access to the open space in that area. This was all done at no expense to the Township of Holmdel.

Laurel Avenue Bridge Project Initiated

The initial phase in the improvement of the NJ Transit Railroad Bridge over Laurel Avenue was initiated. The Township transferred a Federal Grant that was received for bridge improvements to the County of Monmouth. The County of Monmouth is in the process of soliciting engineering proposals for the first phase of the bridge redesign and replacement. This is a complex and long term project that will take several years to implement.

A Message from our POLICE DEPARTMENT

Click it or Ticket ~ May 23 thru June 5, 2011

Cracking Down on Seat Belt Use ~ Especially at Night

Law Enforcement officers from the Holmdel Township Police Department will be cracking down on unbuckled motorists and their passengers as part of the national "Click It or Ticket" campaign.

Too Many Are Not Getting the Message....There were 23,382 occupants of passenger cars, pickup trucks, vans, and SUVs killed in motor vehicle traffic crashes in 2009, and 53 percent of fatally injured passenger vehicle occupants were **NOT** wearing seat belts at the time of the fatal crashes.

- In 2009, 11,593 passenger vehicle occupants were killed in motor vehicle traffic crashes at **night** (6 p.m. to 5:59 a.m.). Nearly two-thirds (62 percent) were not wearing seat belts (compared to 44 percent of occupants killed during the daytime hours of 6 a.m. to 5:59 p.m.)
- Almost half (42 percent) of the 754 **passenger vehicle occupants** 12 and older killed in motor vehicle traffic crashes were not buckled up.
- **Passenger vehicle occupants** 13 to 15 years old have the highest percentage (67 percent) of all age groups to be fatally injured and unrestrained in traffic crashes.
- Among **young adult passenger vehicle occupants** 18 to 34 who were killed in crashes, 63 percent were not buckled up – the second highest percentage for any age group.
- Men are less likely than women to buckle up. This is especially true of young men. In 2009, 66 percent of **men** 18 to 34 killed in passenger vehicles were not wearing their seat belts.
- **Pickup truck drivers and passengers** continue to have lower restraint use rates than occupants of other passenger vehicles. In 2009, 68 percent of pickup truck occupants who were killed in traffic crashes were not buckled up.

Seat Belts Save Lives!

- Seat belts, when used by passenger vehicle occupants 5 and older, saved an estimated 12,713 lives in 2009 – more than 72,000 lives from 2005 through 2009 – and 267,890 lives from 1975 through 2009.
- Worn correctly, seat belts reduce the risk of fatal injury by 45 percent for front-seat passenger car occupants – and by 60 percent for pickup truck, SUV and van occupants.
- In fatal crashes in 2009, 77 percent of passenger vehicle occupants who were thrown from their vehicles were killed. However, only 1 percent of crash victims who were buckled up were totally ejected from their vehicles, compared to 31 percent of those who were unbuckled.

Motorists are 75 percent less likely to be killed in rollover crashes if they are buckled up.

Click It or Ticket 2011 – Cracking Down on Low Belt Use – Especially at Night

- **Enforcement Works** – *Click It or Ticket* has helped increase the observed national belt usage rate which rose to an all-time high of 85 percent in 2010, up from just 58 percent in 1994.
- **Local efforts, national reach** – Thousands of state and local law enforcement and highway safety officials across the nation will participate in the national *Click It or Ticket* enforcement mobilization from May 23 to June 5.
- **Twenty-four hours a day** – To convince more nighttime drivers to buckle up, the 2011 mobilization will include round-the-clock enforcement – but especially at night.
- **We can't stop now** – The national *Click It or Ticket* mobilization has increased seat belt use and saved lives, but there is still much more to do. Highly visible enforcement and greater public awareness can turn thousands of lives lost into many more lives saved!

NEWS FROM THE TAX COLLECTOR

As we approach the final billing for the 2011 tax year, please keep in mind tax bills can not be printed until we have a certified tax rate. This rate is contingent upon the State of New Jersey's budget; therefore it sometimes causes delays in tax bill mailing.

The tax bills are required, by state statute, to be mailed a minimum of 25 days prior to the due date of August 1st. Should there be a delay in billing an extended grace period is granted to comply with the 25 day bill mailing requirement. The Township does not have the authority to change the statutory due date of August 1st; therefore any payments received after the extension date will incur interest as of August 1st. The extended due date, if applicable, can be found in the message box of your tax bill.

Did you know?

Holmdel Township offers several convenient ways to pay your taxes. Sign up today for automatic withdrawal. This service automatically deducts your property taxes from your bank account (service not available for Money Market accounts) on the 6th of each quarter.

If you prefer to make one-time electronic payments* using your bank account, visit www.holmdeltownship-nj.com, click Online Tax Payments and follow the prompts. We also offer a 24 hour payment drop box located at the entrance of the Municipal Building. Of course personal visits to our payment window are always welcome. Our office hours are Monday thru Friday 9:00am-4:30pm.

*We will be changing our online payment service soon. Once this change occurs a nominal fee of \$1.05 will be charged per electronic payment. This fee is not imposed or collected by the Township but rather by the company handling the transaction. The Tax Collection office is very excited about the new service as it will afford you much more information including payment history.

Contact the Tax Collection Office for more information (732)946-2820 ext 1424

ELECTION INFORMATION

Voter Registration: To register to vote you must be a United States resident, 18 years old by the next election and a resident of the county for 30 days before the Election. The registration deadline to vote at the next election is 21 days prior to election day.

Voter registrations are available for Holmdel Township residents at the Township Clerk's Office or at the County Board of Elections Office in Freehold, NJ.

A registered voter desiring to affiliate with a party or change their party affiliation must file a Political Party Affiliation Declaration Form 50 days before an election.

In New Jersey, any voter can vote via a Mail Ballot. You do not need to state a reason for a Vote By Mail Ballot. A completed Application for Vote By Mail Ballot may be sent to the Monmouth County Clerk up to 7 days prior to the election by mail or delivered in person to the Monmouth County Clerk's Office until 3:00 pm, the day before the election.

All forms noted above can be downloaded from the Town's website: www.holmdeltownship-nj.com.

For the year 2011 the Primary Election will be held on Tuesday, June 7, 2011, and the General Election will be held on Tuesday, November 8, 2011.

*The Monmouth County Board of Elections is looking for people to work the polls on Election Day. Make \$200 a day and be a part of the voting process. You must be a Monmouth County resident and a registered voter. For more information contact the County Board of Elections at 732-431-7802 or bscott@co.monmouth.nj.us.



PARKS AND RECREATION

732-946-2820 x 1225

PARKS & FACILITIES RESERVATIONS

Senior/Community Center is available for group/party rentals. The Center can accommodate a maximum of 150 people. Minimum rental is 2 hours, maximum 5 hours. Fee for residents is \$125 per hour, non-residents is \$250 per hour; plus a refundable security deposit of \$250. For reservations please call 732-946-2820, extension 1224.

Picnic Pavilions at Cross Farm Park and Veteran's Memorial Park

The Office of Parks & Recreation is accepting reservations for their Picnic Pavilions. They can be reserved between May 1 and September 30, 2011.

Cross Farm Park located off Rt. 520 and Longbridge Rd accommodates a maximum of 200 persons. Fee for residents is \$200 per day, non-resident is \$400 per day. In conjunction with Cross Farm Park Pavilion rental, the concession/kitchen is available at an additional fee of \$100 per day for resident and \$200 per day for non-resident.

Veterans Memorial Park located off Telegraph Hill Rd accommodates a maximum of 100 persons. Resident fee is \$150 per day and non-resident is \$300 per day. A ball field, in conjunction with either facility, if available is \$50 per day for resident and \$100 per day for non-resident. Refundable security deposit is \$150, plus applicable fees.

Bayonet Farm Usage: The natural beauty of Bayonet Farm provides a spectacular backdrop for your special event. Two charming barns and designated grounds area are available for your wedding, reunion or party celebration. It is located at 41 Middletown Road. Call for 2011 fees. (Depending upon the nature of the request, there may be additional fees for staffing and related expenses). Minimum rental is 2 hrs, maximum 5 hrs. Refundable security deposit is \$250, plus applicable fees.

For additional information on reservations, please contact the Office of Parks & Recreation at 732-946-2820, ext. 1223.

2011 Holmdel Recreation Summer Day Camp

(Mondays-Fridays starting July 5th and ending August 12th)

K-6th grade at W.R. Satz School (9:15am–12:15pm)

Fees: \$240.00 First Child/\$205.00 each additional sibling

Join your friends for a summer of games, sports, arts & crafts, special events, trips and more! This program is open to Holmdel children who have completed kindergarten or are six years of age by the start of the program up to children who have completed sixth grade. Proof of age (kindergarten only) and residency required. A flyer was sent home through the schools with program details. Registration began March 28 and ends on May 31 or unless program is filled. For more information please check our website or contact the Office of Parks & Recreation 732-946-2820, x 1225 or email recreation@holmdeltownship-nj.com.



Adult and Children's Tennis Lessons are being planned for the Summer and Fall Season. The Spring Tennis Lesson Season had an outstanding turnout. We would like to thank all the participants who registered for the spring classes, and we look forward to seeing you out on the tennis courts during the summer and fall. For further information regarding tennis lessons, please contact Michelle Frazzitta at 732-946-2820, ext. 1226 or email recreation@holmdeltownship-nj.com.

The office of Parks and Recreation would like to thank all the residents for their support and the volunteers who donate their valuable time to make our events such successful. For more information on future volunteer opportunities, please contact Deborah Dow at 732-946-2820, ext. 1224 or ddow@holmdeltownship-nj.com.

PARKS AND RECREATION

CALENDAR OF PROGRAMS & EVENTS

July~August~September

| | | |
|---------------------------|---------------------------------|----------------|
| • Body Sculpt | Mondays, Wednesdays, Fridays AM | Adults |
| • Senior Workout | Mondays, Wednesdays, Fridays AM | Residents 50+ |
| • Yoga AM | Thursdays | Adults |
| • Yoga PM | Mondays, Tuesdays, Thursdays | Adults |
| • Zumba | Wednesdays PM | Adults |
| • Karate | Wednesdays, Fridays PM | ages 7-70 |
| • Kickboxing | Thursdays & Saturdays PM | Adults |
| • Senior Cooking Class | Monthly | Residents 50+ |
| • Tennis Lessons | Monday thru Friday | Youth & Adults |
| • Swim Club-August | August 1 thru Sept. 6 | Members Only |
| • Arts & Music Festival | September 25th (Bayonet Farm) | All |
| • Men's Basketball (Sept) | Tuesdays & Thursdays PM | Adults |

Programs are subject to change (based on participation)

Year round sport activities for Holmdel Youths ~HYAA-732-817-9222 or HYAA.org

Stallions Traveling Soccer ~ HolmdelStallions.org

Mavericks (Lacrosse) ~ Scott Cort 732-888-3743 or Kevin Gilfillan 732-616-7964

Half Century Club; Activities for Sr. Citizens of Holmdel 50+ ~Toni Brescia 732-264-1002



Swim & Tennis Center

Memorial Day Weekend will welcome the official opening , weekends only, of the Holmdel Swim & Tennis Center. Starting Monday, June 27th, the Club House will be open full-time until Labor Day. It is a great place for you and your family to spend the summer days. The Club offers a number of amenities ~ 25 meter pool, wading pool, intermediate pool, diving tank, three tennis courts, basketball courts, horseshoe pits, volleyball court, and a tot lot. Lockers are available on 1st come 1st served basis. There is a convenient snack bar and ample parking. Memberships are available for family, individuals and Sr. Citizens.

2011 Swim Club Applications: Parks & Recreation Office, PO Box 410, Holmdel; www.holmdeltownship-nj.com, or send request to recreation@holmdeltownship-nj.com. For further information, call the Parks & Recreation Office at 732-946-2820, ext. 1225.

SAVE THE DATE: The **2011 Bayonet Farm Arts & Music Festival** is set for September 25th at Bayonet Farm located at 41 Middletown Road. The Festival includes a juried art show, A Plein Air paint out, performances by local musicians, dancers and actors, demonstrations of raku, pottery wheel and lots of hands on activities for children and adults.

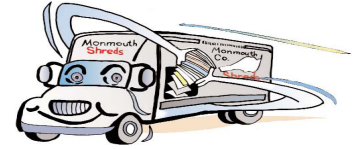


RECYCLING



MONMOUTH COUNTY & HOLMDEL TOWNSHIP

Partner in a PAPER SHREDDING EVENT



WHEN: SUNDAY, MAY 22, 2011 (9:00 am – 1:00 pm)

WHERE: Behind Holmdel High School– 36 Crawfords Corner Rd., Holmdel

(Traffic Pattern ~ upon entrance of school follow orange cones)

Is it time for you to dispose of private and confidential files safely?

Come to our mobile paper shredding event! Bring all confidential, sensitive and private papers.

All papers will be shredded on location in a mobile truck! You can watch all of your papers being destroyed!

Do not bring more than 100 lbs. of paper per person. Due to heavy demand, weight limit will be strictly enforced. Service stopped once truck filled. Remove large binder clips. Staples and paper clips are ok. **This is a free service to all county residents.**

Sponsored by the Monmouth County Board of Chosen Freeholders and Holmdel Township.

BACKYARD COMPOSTING

Reduce waste and improve your soil! Learn about the practical tips of composting at the County sponsored 45 minute presentation at Deep Cut Garden, Red Hill Road, Middletown on Saturday, May 21 ~ 10:00 am. On display are composting units which are both commercially available and home-built so that you can choose the composting system that best suits you. Pre-Registration is required. Spaces are limited and open to Monmouth County residents only. There is no fee for attending the workshop only. For further information or registration forms please visit the County's website at www.co.monmouth.nj.us/recycling or call 732-431-7460.

Computer & Electronic Recycling is now available to residents year round at our Department of Public Works Facility located at 14 Crawford's Corner Rd. Hours are from 8:00 am–2:30 pm.

Items accepted are: computer cases, keyboards, mice, monitors, scanners, printers, cables, laptops, peripherals, televisions, radios, cameras, telephones, copiers, fax machines, VCR's, DVD Players, and Stereo Components.

Should you not have ability to transport items to the DPW yard, home/business pick up is available for a fee. Please contact Monmouth Computer Recycling at 732-922-3322 for further information.

Shopping Bag Incentive Program: Bring 20 or more plastic shopping bags to the Clerk's office at Town Hall between the hours of 9:00am-4:00pm, Monday through Friday, and receive two reusable cloth bags in exchange for the 20 or more plastic bags!

REDUCE
REUSE
RECYCLE

HOW CAN WE REUSE OR RECYCLE?....
HINTS FROM HOLMDEL'S GREEN TEAM COMMITTEE

REDUCE
REUSE
RECYCLE

Most Holmdel residents have been very good about recycling. Cardboard, mixed paper, bottles and cans are being put out curbside or taken to the bins at Public Works. Recycling makes cents for our Town.

It's mandatory to recycle . (If a summons is issued, a court appearance is required, with a possible fine of \$200. Ouch!)

You'd be surprised to learn how much of the other stuff you don't want anymore can be put to good use or recycled.

Here's a partial but growing list of places for:

- ◆ BATTERIES (rechargeable)- Best Buy, Lowes, Home Depot, Holmdel Fire Co., or Town Hall
- ◆ CLOTHING- Drop off clothes anytime at the bins in front of K-Mart, Lowe's
- ◆ COMPACT FLOURESCENT LIGHT BULBS- Lowe's or Home Depot
- ◆ COMPUTERS, monitors, keyboards, mice, fax machines, printers- Holmdel has a special bin for these things at the Public Works recycling area.
- ◆ EYEGASSES- Dr.Buchman's Vision Care at 55A Rte. 34, at the light north of Deer Path. The specs go to New Eyes for the Needy.
- ◆ LEAVES- The town picks them up a few times a year. Better yet, make your own compost pile 3'x3'x3'. It will decay on it's own, and the resulting humus makes a great addition to your garden.
- ◆ Scrap METAL- You may drop this off at Large Item Dropoff. For free pickup of metals (washing machines, grills, bikes, etc.), phone 732-284-0175. This is done by a college student from Colts Neck who is studying ecology.
- ◆ MOTOR OIL- Any gas station that services cars, such as B and G Gulf at Holmdel and Bethany Rds., is required to take old oil.
- ◆ #5 PLASTIC (yogurt, cottage cheese, sour cream containers)- Whole Foods recycles these.
- ◆ PLASTIC BAGS- Dearborn, Pathmark, A&P, Town Hall, Whole Foods, Shop Rite even pays you 5c for the bags you reuse there.
- ◆ PLASTIC FLOWER POTS- Dearborn Market (Rte. 35 and Centerville) collects these. Their bins are back behind the greenhouse.
- ◆ Working REFRIGERATORS and FREEZERS – Phone 877-270-3520 for a free pick-up. They will pay you \$50 besides.
- ◆ RUBBER BANDS- the post office
- ◆ STYROFOAM PEANUTS- UPS Store (Rte. 35 and Harmony Rd.) or Staples (Rte 35 and Hazlet Ave.)

There are several charities who pick up a wide variety of items once a month or so. They then auction off the items to thrift stores such as Goodwill. The stuff gets a new home, and the proceeds go to the charities.

- ◆ BIG BROTHERS BIG SISTERS 877-336-8828 or njpickup.org
- ◆ LUPUS FOUNDATION 888-445-8787 Doesn't take leather, upholstered furniture, mattresses, office furniture, washers, driers, fridges.
- ◆ WAR VETERANS COUNCIL 888-821-8982 Doesn't take upholstered furniture, mattresses or major appliances.
- ◆ LARGE ITEM DROP OFF at our Public Works sells its collection to the benefit of our town.

You can give away stuff yourself via : the FREE STUFF column in Holmdel Happenings. avamend@aol.com and FREecycle at freecycle.org You can give away upholstered furniture, mattresses and just about anything else.



HOLMDEL SHADE TREE COMMISSION

TAKE CARE WITH SPRING CLEANUP

Now that winter storms have finally ceased, folks are beginning the spring chore of cleaning up tree and shrub damage. If you choose to have someone else do the work, how do you choose a contractor? How do you protect yourself when you need to hire a tree care company?

Don't just hire someone who shows up with a chain saw. Beware of disreputable companies that may stop by and ring your doorbell as they tend to solicit work door-to-door, demand payment in advance, sell jobs without producing a written estimate or work order, and advertise topping trees.

Topping is also called: stubbing, heading, tipping, hat-racking, dehorning or roundover. It is not pruning. It is the indiscriminate removal of branch ends. Topping injures and ultimately results in early failure or death of a tree. Topping will not make the tree easier to maintain, does not invigorate a tree, and topped trees will not add value to your property.

Begin by looking in the yellow pages for licensed contractors, or ask friends who are proud of the work done for them in the past. In ads look for license numbers, years in

business, certifications, insurance coverage, and membership in accrediting organizations such as the International Society of Arborists and Certified Tree Experts.

When you meet with an arborist ask to see current certificates of liability, compensation insurance, and local references to check on the quality of their work and level of service. Don't be carried away with a bargain, and don't pay in advance. Find out if the service plans to use a cherry picker or climbing for high work. Spikes are only to be used if the tree is to be cut down as the spikes permanently damage the tree. Insist on a signed contract as to cost, dates when work is to be done, and exactly what is to be done. Find out who is responsible for removing the brush and wood.

On Behalf of the Shade Tree Commission

Jenni Blumenthal

jblumenthal@comcast.net



HOLMDEL FIRST AID GARAGE SALE

The squad's huge annual Garage Sale fundraiser will be held at the Crawfords Corner Road building on Sunday, June 12th. The volunteers run the sale with unwanted items donated by residents. The Holmdel First Aid is looking for donations to make this sale a success. They need your help. "Drop-off" for residents of unwanted items will be held from 9:00am to noon on May 28th. Tax donation receipts are available upon request.

Most household goods are accepted such as indoor/outdoor furniture, home appliances, lawn and garden equipment, televisions, bicycles and children's toys. Books are popular, as are working electronics.

For questions or information please contact Michael Nikolis 732-778-8308 or hfagaragesale@gmail.com

The Holmdel First Aid Squad (HFAS) invites the community to their 5th Annual Community Health Awareness Night on Tuesday, May 24th from 6:00-9:00pm. Important information regarding strokes will be discussed by keynote speakers from the Meridian Health System. Event will be held at the Holmdel Senior/Community Center. For further information, please contact Shufen at 732-335-1136 or shufenwang@gmail.com.

STORMWATER MANAGEMENT

WHEN YOU'RE WASHING YOUR CAR IN
THE DRIVEWAY, REMEMBER YOU'RE NOT
JUST WASHING YOUR CAR
IN THE DRIVEWAY.



Rain washes pollutants into storm drains and directly into our lakes, rivers and the ocean.
So what can you do? Take your car to a car wash where
the water gets treated and recycled.

www.cleanwaterNJ.org



Bradley M. Campbell, Commissioner
NJ Department of Environmental Protection

Thanks to the Washington Department of Ecology, King County, and the cities of Bellevue, Seattle and Tacoma.

HOLMDEL ALLIANCE TO PREVENT ALCOHOLISM AND DRUG ABUSE

Teen Parties & Alcohol Don't Mix

“Parents Who Host, Lose The Most: Don't be a party to teenage drinking”

Many high school students view prom or graduation as a rite of passage into an adult world in which alcohol and celebrations go hand in hand. Some parents support this belief by hosting prom or graduation parties that include their child's friends where alcohol is provided.

Adults providing alcohol to underage youth sends a mixed message and can only add to a teenager's confusion about the acceptability of drinking. This also sends the message to teens that they do not have to obey the law. **It is illegal, unsafe, and unhealthy for anyone under the age of 21 to drink alcohol. Remember – a teenager's brain is still developing and it is very sensitive to alcohol's effects on judgment and decision making.**

Underage drinking parties are a health and safety problem with serious legal ramifications. “Parents Who Host, Lose The Most: Don't be a party to teenage drinking”.



Get the facts: They're Sobering!

FACT: It is a criminal offense in the state of New Jersey (2C:33-17a) to serve alcohol to anyone who is under the legal age of 21.

FACT: It is a criminal offense in the state of New Jersey (2C:33-17b) to make your home or property available for the purpose of allowing minors a place to consume alcohol.

FACT: New Jersey's Social Host Liability Law imposes civil penalties on social hosts who serve alcohol to minors who subsequently are involved in incidents causing death or injury.

FACT: Parents can be sued if they give alcohol to anyone under 21 and they in turn hurt someone, hurt themselves or damage property.

Parents can protect themselves and their teens by following these guidelines when hosting parties for their children:

- * Host safe, alcohol-free activities and events for youth during prom and graduation season.
- * Refuse to supply alcohol to children or allow drinking in your home or on your property.
- * Be at home when your teenager has a party.
- * Make sure your teenager's friends do not bring alcohol into your home.
- * Talk to other parents about not providing alcohol at youth events.
- * Provide non-alcoholic beverages.
- * Report underage drinking.

To help promote the Holmdel Alliance's efforts to raise awareness of the dangers of underage drinking, all parents of 11th and 12th grade students receive a letter from the Alliance with a pamphlet giving parents information on New Jersey's underage drinking laws. Also, all parents of 12th grade students receive a booklet titled "What Parents Need to Know About College Drinking". In addition, the entire 12th grade class of Holmdel High School attends a program each spring that raises awareness of the dangers of underage drinking and the devastating consequences of drinking and driving called **Sudden Impact**. This program gives the students the opportunity to learn about what life-altering damage can be caused by the misuse of alcohol and drugs. The program includes an assembly program that outlines what really happens in a car crash, the hospital, the court room and how a DWI conviction can impact your life. All students are given the opportunity to drive modified golf carts through a coned course while wearing fatal vision goggles designed to show students the dangers of combining alcohol with driving. The Holmdel Alliance was formed to help our community and its citizens make informed decisions about alcohol and substance abuse. By providing programs and activities we strive to promote a "no-use" message in our community and our schools.

For local information and resources, visit www.holmdeltownship-nj.com (see Holmdel Alliance link) - The Alliance meets the 3rd Tuesday of each month in the Holmdel High School library at 1:00 pm. Everyone is encouraged to attend and join the Alliance. For more information or questions call the Holmdel Alliance at 732-946-4330 ext 1212 or email bhilliard51@comcast.net

Volunteers are needed – join the Alliance!!!

THE 2011 TOWNSHIP COMMITTEE

Mayor Patrick Impreveduto
 Deputy Mayor Serena DiMaso
 Committeeman Larry Fink
 Committeeman Eric Hinds
 Committeeman Rocco Pascucci

To contact any of the Governing Body members if you have questions or comments about anything going on in Town, you may call the Township Clerk at 732-946-2820, extension 1211 or email info@holmdeltownship-nj.com.

Holmdel Township Municipal Offices

PO Box 410

Holmdel, NJ 07733

Business hours 9:00 am to 4:30 pm, Mon-Fri.

**Board of Health, Construction Department,
 Planning/Zoning & Tax Assessor offices have
 hours from 9:00 am until 7:00 pm on Mondays**

Holmdel Library Hours:

Mondays: 1:00pm–9:00pm

Tuesdays: 9:00am–5:00pm

Wednesdays: 1:00pm–9:00pm

Thursdays: 9:00am–5:00pm

Fridays: 1:00pm–5:00pm

Saturdays: 9:00am–5:00pm

(July & August/Saturdays 9:00am–1:00 pm)



To better communicate with you, sign up for the Township's Code Red Communications System in order to receive emergency alerts and public announcements. Your contact information will remain private and will only be used for this purpose. You may sign up by visiting our website www.holmdeltownship-nj.com.

STAFF DIRECTORY

The staff of Holmdel Township is here to assist the public whenever possible. Please use the following list of extensions when dialing 732-946-2820 to contact a municipal staff member or department.

| | |
|------------|-----------------------------------|
| 1204 | Administration |
| 1501 | Board of Health |
| 1303, 1305 | Building Inspections/Construction |
| 1604 | Court Clerk |
| 1204 | Code Enforcement |
| 1953 | Dept. of Public Works |
| 1341 | Environmental Commission |
| 1315 | Fire Prevention |
| 1212 | Mayor/Township Committee |
| 1225 | Parks & Recreation |
| 1322 | Planning Board |
| 1212 | Recycling |
| 1411 | Sewer |
| 1341 | Shade Tree Committee |
| 1432 | Tax Assessor |
| 1423 | Tax Collector |
| 1211 | Township Clerk |
| 1323 | Zoning Board |
| 1315 | Zoning Officer |

OTHER NUMBERS:

Holmdel Board of Education 732-946-8686

Holmdel Library 732-946-4118

Holmdel Post Office 732-946-4710

Police Department (non-emergency) 732-946-9690