

# H o l m d e l T o w n s h i p NEWSLETTER



**HOLMDEL TOWNSHIP**

**• Visit our website at:**

[www.holmdeltownship-nj.com](http://www.holmdeltownship-nj.com)

**• E-mail us at:**

[info@holmdeltownship-nj.com](mailto:info@holmdeltownship-nj.com)

\*\*\*\*\*

**Township Holiday Closing ~  
2011**

- Friday ~ April 22
- Monday ~ May 30
- Monday ~ July 4
- Monday ~ September 5
- Monday ~ October 10
- Friday ~ November 11
- Thursday ~ November 24
- Friday ~ November 25
- Friday ~ December 23
- Monday ~ December 26

**In this Issue**

|                           | <u>Page</u> |
|---------------------------|-------------|
| Message from the Mayor    | 1           |
| Engineer's Corner         | 2           |
| Tax Collector             | 3           |
| Tax Assessor              | 3           |
| Police Department         | 4-5         |
| First Aid                 | 5           |
| Parks & Recreation        | 6-7         |
| Recycling                 | 8           |
| Board of Health           | 9           |
| Shade Tree Commission     | 9           |
| Historical Society        | 10          |
| Environmental Commission  | 10          |
| Bayonet Farm Arts & Music | 10          |
| Holmdel Alliance          | 11          |
| Municipal Information     | 12          |

**Message from the Mayor and Township Committee**

Happy New Year everyone! I can honestly say my first month as Mayor has been eventful with 30 plus inches of snow. I would like to take this time to thank all of our Township Employees in dealing with this unprecedented snow fall. To you, the public, thank you for your understanding and cooperation. I know Holmdel as a community will get through this unique winter.

During the month of January the Committee and I have been working on our agenda for 2011. This isn't an easy task. As a community, Holmdel has taken some financial blows. I hate to say it, but I expect we'll take a few more before the hard times are done.

Last year, due to the difficult economic circumstances in the State and in the country, the Township Committee passed a budget which reduced spending by over \$500,000.00 from the previous year.

Governor Christie, to his credit, is making the difficult decisions in Trenton.

Unfortunately in order to get New Jersey's fiscal house in order means a further reduction of aid to municipalities.

The Township Committee is going to have to reinvent the way we do a lot of things both in Town Hall and in the Community at large. We also need to work together as a community more aggressively then we have ever done before.

We must devote ourselves to reshaping the way we do things in order to lay the foundation for a future that is both prosperous and sustainable.

To that end, the Committee and I will aggressively seek opportunities to lower costs by working with Township employees on realistic salary and benefits packages, by sharing services with other municipalities, or by outsourcing services to an entity which can provide a cost savings to the Township.

I want to assure our residents, while we will be looking to lower costs of delivering services, we will not enter into any agreements which will dramatically diminish the level of service.

Finally, the Committee and I will continue to work with Actel-Lucent to pursue a developer for the property. In recent months there has been serious negotiations, but nothing is imminent; however I am cautiously optimistic that this year will bring substantial progress to resolving this issue.



*Patrick Impreveduto sworn in as Mayor of Holmdel Township at the Town's Reorganazation meeting on January 3, 2011*

Again, let me reassure our residents, any development agreement at Lucent or anywhere else will include two major criteria; it will benefit Holmdel taxpayers and it will preserve the character of Holmdel.

The Committee and I realize we don't have all of the answers. We strongly encourage the residents of Holmdel to attend meetings or e-mail us at [info@holmdeltownship-nj.com](mailto:info@holmdeltownship-nj.com) to present your thoughts, concerns or ideas.

I look forward to working with you and for you in 2011.

**On Behalf of The Township Committee**

Mayor, Patrick Impreveduto

## \*\*\*\*\*ENGINEER'S CORNER\*\*\*\*\*

*Township Engineer Edward Broberg, P.E. provided the following information concerning ongoing engineering & construction projects:*

### • **Capital Improvement Program Nearly Complete**

The 2009 Capital Improvement Program has been under construction for approximately six months and is nearly complete. It involved the rehabilitation of the northern section of Middletown Road, the reconstruction of a section of Ashley Drive, pavement repairs on many local and collector roads, curb replacements throughout town, including Countrywoods, and drainage construction on Old Mill Lane, Galewood Terrace and in the Sweetbriar/Wildhedge Subdivision.

### • **2010 Road Program Ready for Bid**

The 2010 Capital Improvement Program involves the reconstruction of Manee Place, continued curb replacement in Countrywoods and several other locations, pavement repairs on both interior streets and collector streets, and crack sealing on a number of locations throughout town. Due to fiscal constraints, the 2010 program is focused on stabilizing areas that are deteriorating.

If a decision is made to proceed with sewers on Manee Place, the rehabilitation of Manee Place will be delayed until the sewer project is complete.

### • **Shared Services**

In an effort to reduce overall costs for both the Township and the Board of Education, a decision was made to combine the Board of Education's capital improvement program with the Township's capital improvement program. It is anticipated that this will result in a larger project with lower overall costs for both agencies.

### • **Bayonet Farm Rehabilitation**

Over the past several months, major improvements have been made on both the Bayonet Farm site and buildings. New septic systems were installed at the Harding House and the Red Barn and a fairly elaborate drainage system was constructed at both locations. These improvements were made so that the farm can be used for special events such as weddings that will generate revenue for maintenance and future improvement projects at the farm.

### • **Route 35 Improvements Completed**

In a cooperative program with the New Jersey Department of Transportation, Holmdel partnered with the State to provide a southbound auxiliary travel lane on Route 35 between the Lowes complex and Centerville Road. The Township's share of the funding was provided by developer contribution from the Lowes Corporation. The lane is complete and has been successful in reducing congestion that exists in the southbound direction between Miller Avenue and Centerville Road.

### • **Bethany Road/Keyport Road Intersection Proceeds**

The County of Monmouth awarded a construction contract for the improvement of the intersection of Bethany Road and Holmdel Road last year. The project started with the relocation of utilities and the installation of drainage. The project has been dormant over the winter months, but is expected to be complete in 2011. The improvement will provide left turn lanes in each direction and should substantially improve traffic conditions in the Bethany Road corridor.

### • **Township Applies for State Aid**

The Township recently partnered with Hazlet Township to apply for a State Aid Grant to improve Bethany Road between the Garden State Parkway and Line Road. This section of road forms the border between the two municipalities and required coordinated applications to the New Jersey Department of Transportation for these improvements.

### • **Holmdel Awarded Energy Efficiency Grants**

The Township was recently awarded grants for energy conservation related improvements at our municipal facilities. As part of this project, the existing lighting will be upgraded in the Municipal Building and in the library.

### • **Laurel Avenue Improvements Proceeding**

As part of the approval for the TD/Commerce Bank on Laurel Avenue, the Township and County required improvements to Laurel Avenue, in front of the bank and adjacent to the Route 35 jughandle. The bank is nearly complete and the improvements are expected to be completed by mid-winter. Additional travel lanes on Laurel Avenue northbound toward Route 35 will be added as part of this project.

### • **Bridge Funds Transferred to Monmouth County**

Several years ago, the Township of Holmdel made application to the Federal Government for funding for the replacement of the Laurel Avenue Railroad Bridge. This bridge has been a serious safety problem for many years, involving vehicular traffic, personal injuries and truck accidents. The Governing Body is hopeful that the County, with cooperation from the North Jersey Transportation Planning Authority, can move this project forward so that the bridge can be replaced. It is an expensive long term project.

## NEWS FROM THE TAX COLLECTOR

### GUIDELINES FOR 2010 HOMESTEAD REBATES

Governor Christie has mandated that rebates through the 2010 Homestead Rebate Program be issued as credits to 2011 2nd quarter installments. The Tax Collection office anticipates receiving the list of property owners and credit amounts sometime in March; adjusted bills are scheduled to be mailed the first week of April.

### DID YOU KNOW?

Holmdel Township offers several convenient ways to pay your taxes. Sign up today for automatic withdrawal. This service automatically deducts your property taxes from your bank account (service not available for Money Market accounts) on the 6th of each quarter. If you prefer to make on-line electronic payments using your bank account, visit [www.holmdeltownship-nj.com](http://www.holmdeltownship-nj.com), click Online Tax Payments and follow the prompts. We also offer 24 hour payment drop box located at the entrance of the Municipal Building. Of course personal visits to our payment window are always welcome. Our office hours are Monday thru Friday, 9:00am-4:00pm.

Contact the Tax Collection Office for more information (732) 946-2820, extension 1424.

## UPDATE FROM THE TAX ASSESSOR'S OFFICE

Property assessments have been certified; owners will be receiving their property assessment postcard early February 2011 .

If you disagree with the value placed on your property you have the right to file an appeal. As always, the burden of proof is on the property owner to prove that the assessed value placed on your property is incorrect. Appeals may be filed with the Monmouth County Tax Board located in the Hall of Records Building, 1 E. Main Street, Freehold, NJ on or before April 1, 2011. The appeal **MUST BE RECEIVED NOT POSTMARKED** at the Monmouth County Tax Board by April 1.

To file an appeal you may go to [www.visitmonmouth.com](http://www.visitmonmouth.com), click on the "Tax Information" link, then click on "Forms" link and scroll down to "Regular Tax Appeal for A-1" to download Appeal Form and Instructions on "How to File an Appeal" or you may call the Monmouth County Tax Board for an Appeal Packet at 732/431-7404.

If you are a veteran you may file for a \$250.00 Veteran deduction; no budgetary requirements. If you are a senior or disabled citizen, earning less than \$10,000 per year, excluding your social security, you may file for a Senior/disabled deduction. If you are 65+ years of age and have lived in New Jersey for ten(10) years and your current residence for three(3) years you may apply for the Reimbursement /Freeze Act through the State of NJ at 1/800-882-6597.

If you have any questions, please call the Tax Assessor's office at 732/946-2820 ext 1432.

Office hours are Monday 11 am to 7 pm, Tuesday thru Friday 9 am to 4:30 pm except holidays.

Eldo Magnani, Jr. CTA  
Assessor

Eileen Marchetti  
Assistant Assessor

## A Message from our POLICE DEPARTMENT

### DWI REMEMBRANCE DAY

The New Jersey Department of Highway Traffic Safety will host a "DWI Remembrance Day" on April 27, 2011 at the Trenton War Memorial. The event will honor and remember victims of drunk drivers. The Holmdel Township Police Department Traffic Safety Unit is asking anyone who may be a victim or anyone who may know a victim to please contact us if they would like to join in this effort.

It is hoped that everyone will join us to make this an annual event, to bring light to the disastrous consequences of drunk driving and the tragic impact that it has upon victims and survivors.

If you would like further information please contact Sergeant Kenneth McGowan or Patrolman Robert Philhower at 732-946-9690, extension 1732.

### THE CORRECT WAY TO USE YOUR SAFETY BELT

According to the Department of Transportation, when used correctly, lap and shoulder safety belts can reduce the risk of fatal injuries if a car accident occurs.

NHTSA research shows that for front-seat passenger car occupants, who use safety belts, the risk of fatal injury is reduced by 45% and the risk of moderate-to critical injury is reduced by 50%.

**Wear Your Safety:** Safety belts hold occupants in place while the vehicle absorbs the impact of the crash. They protect the driver's head and spinal cord, and prevent occupants from being ejected from the vehicle or thrown around inside the vehicle.

**Make Sure Your Safety Belt Fits Properly:** According to the National Safety Council, the shoulder strap should cross the collarbone, and the lap belt should fit tightly and should be low on the hips. The shoulder strap should never be slipped behind the back or under an arm. Do not wear the shoulder belt too snugly or let it rub against your neck, and do not allow the belts to become too loose.

**Maintain Your Safety Belt Equipment:** Check your safety belt for broken components. Also check your vehicle's operator's manual for safety belt maintenance tips.

Results from the Federal Motor Carrier Safety Administration's 2009 Seat Belt Usage by Commercial Motor Vehicle Drivers survey show 74% of commercial truck and bus drivers use their safety belts, compared with only 65% of CMV drivers who reported using safety belts in 2007.

CMV drivers can help reduce deaths and injuries even further by following these reminders from FMSCA:

### Tips for Preventing Slips & Falls

#### Exercise

Regular exercise significantly reduces an older adult's chances of falling. Strength training exercises that improve balance and coordination, like Tai Chi, are most helpful. As a precaution, check with a doctor to determine the most appropriate exercise for each person.

#### Home Safety Check

- Remove things that might be tripped over (such as magazines, clothing and shoes from stairs and walking areas).
- Store items used often in cabinets that can be reached easily without using a step stool.
- Install grab bars in the tub or shower and next to the toilet. Use non-slip mats on the bathtub and shower floors.
- Improve lighting in the home. Brighter lights may be needed to see well. Lamp shades or frosted bulbs can reduce glare. Install handrails and lights on all stairs in the home and outside.

#### Review all medicines with a health care provider

Ask a doctor or local pharmacist to look at all the medicines, including non-

prescription medications. As people age, the way some medicines work in the body can change. Sometimes those changes can make an older person drowsy or light-headed, which could lead to a fall.

#### Check Vision

Make sure an eye doctor checks to be sure eye-glasses are correct and that there are no conditions that limit vision, like glaucoma or cataracts. Poor vision can increase the chance of falling.

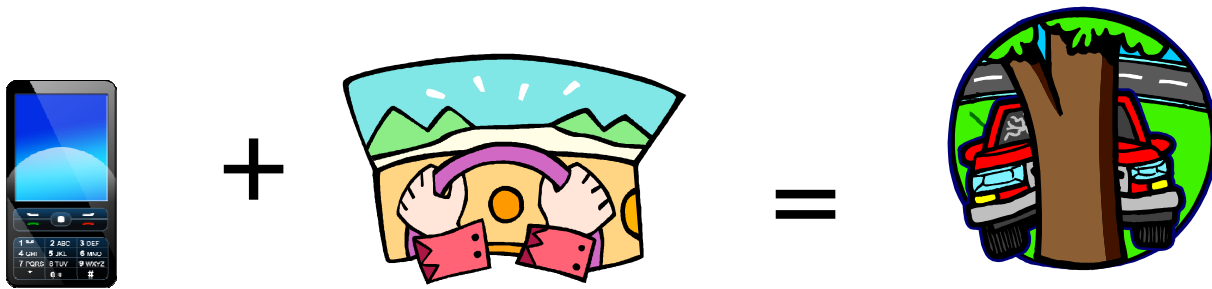
#### Wear Safe Shoes

- Wear sturdy shoes with thin, non-slip soles instead of running shoes with thick soles.
- Wear shoes at all times – especially around the house. Floppy slippers and stockings can increase the risk of falling in the home.
- Shoes should be firmly fastened. Cotton lace or Velcro closings are good choices.

Shoes should have non-skid soles with less than a 1 1/2 inch heel, containing enough space for the toes to lay flat and straight, be lightweight and supportive. The shoes fabric or leather should surround the entire foot.

\*Information is provided by the Municipal Excess Liability Joint Insurance Fund.

## A Message from our POLICE DEPARTMENT



### **ONE SPLIT SECOND CAN CHANGE A LIFE...**

### **ARE YOU SAFE ON THE ROAD OR DRIVEN TO DISTRACTION?**

In 2008, nearly 6000 people in the U. S. were killed in crashes involving driver distractions such as texting, cell phone use, eating and drinking.

**Eighty percent of all crashes and 65 percent of near crashes involve some type of distraction.**

**Every single time someone takes their eyes or focus off the road - even for just a few seconds - they put not only their own lives, but the lives of others in danger.**

**DISTRACTED DRIVING IS UNSAFE, IRRESPONSIBLE AND IN A SPLIT SECOND, CAN CAUSE DEVASTATING, LIFE-CHANGING CONSEQUENCES.**

*If you would like further information or have any question for the Township Police Department, Traffic Safety/Crime Prevention Unit contact Sgt. Kenneth McGowan, Traffic Safety/Crime Prevention Supervisor at 732-946-2820, ext. 1731/ [kmcgowan@holmdelpolice.org](mailto:kmcgowan@holmdelpolice.org) or Ptl. Robert Philhower, Traffic Safety/Crime Prevention Officer at 732-946-2820, ext. 1733 / [rphilhower@holmdelpolice.org](mailto:rphilhower@holmdelpolice.org).*



## **FIRST AID SQUAD**

*The Holmdel First Aid Squad (HFAS) invites the community to their 5th Annual Community Health Awareness Night on Tuesday, May 24th from 6:00-9:00pm. Important information regarding strokes will be discussed by keynote speakers from the Meridian Health System. Event will be held at the Holmdel Senior/Community Center. For further information, please contact Shufen at 732-335-1136 or [shufenwang@gmail.com](mailto:shufenwang@gmail.com).*



732-946-2820 x 1225

## PARKS AND RECREATION

### UPCOMING EVENTS

**Driver Safety Program:** Sunday, April 3rd, 9:00am-4:00pm at the Senior/Community Center.

Take a 7 hour refresher course especially designed for drivers in New Jersey. You will receive a 2 point removal and a 5% reduction on your insurance policy in most cases. The fee is: \$28.00 per person; one check payable to Holmdel Recreation for \$14.00 and one check payable to the instructor on the day of the class for \$14.00 (checks only). Registration required. For further information call or email: 732-946-2820, ext. 1225, or email recreation@holmdeltownship-nj.com.

**Eggstravaganza:** Saturday, April 9th (rain date Sunday, April 10th) at 11:00am at Cross Farm Park (Rt. 520 & Longbridge Rd.) for grades pre kindergarten through 3rd. Holmdel Residents only. FREE EVENT.

Bring a bag/basket to collect the lucky eggs. "Mr. Rabbit" will be in attendance hopping around, dancing, and taking pictures with the children (parents to bring their own camera).

**Memorial Day Ceremony:** Monday, May 30th at 10:30am

Join the Holmdel V.F.W. Post 5918 and the Office of Parks and Recreation as they honor those who have served in all wars. The ceremony will be held at the Memorial Circle in front of Holmdel Town Hall. All are invited to attend this event. Refreshments will be served. **The VFW will be collecting old flags and properly disposing of them.**

### TENNIS LESSONS

Adult and children's tennis lessons are being planned for the Spring, Summer, and Fall season. Our excellent instructors~ Harry, Mary and staff—are back for another year! Forms and information will be available on our website and registration for the Spring session will begin in mid March.

### PARKS & FACILITIES RESERVATIONS

**Senior/Community Center** is available for group/party rentals. The Center can accommodate a maximum of 150 people. Minimum rental is 2 hours, maximum 5 hours. Fee for residents is \$125 per hour, non-residents is \$250 per hour; plus a refundable security deposit of \$250. For reservations please call 732-946-2820, extension 1224.

#### **Picnic Pavilions at Cross Farm Park and Veteran's Memorial Park**

The Office of Parks & Recreation is accepting reservations for their Picnic Pavilions. They can be reserved between May 1 and September 30, 2011.

**Cross Farm Park** located off Rt. 520 and Longbridge Rd accommodates a maximum of 200 persons. Fee for residents is \$200 per day, non-resident is \$400 per day. In conjunction with Cross Farm Park Pavilion rental, the concession/kitchen is available at an additional fee of \$100 per day for resident and \$200 per day for non-resident.

**Veterans Memorial Park** located off Telegraph Hill Rd accommodates a maximum of 100 persons. Resident fee is \$150 per day and non-resident is \$300 per day. A ball field, in conjunction with either facility, if available is \$50 per day for resident and \$100 per day for non-resident. Refundable security deposit is \$150, plus applicable fees.

**Bayonet Farm Usage:** The natural beauty of Bayonet Farm provides a spectacular backdrop for your special event. Two charming barns and designated grounds area are available for your wedding, reunion or party celebration. It is located at 41 Middletown Road. Call for 2011 fees. (Depending upon the nature of the request, there may be additional fees for staffing and related expenses). Minimum rental is 2 hours, maximum 5 hours. Refundable security deposit is \$250, plus applicable fees.

*For additional information on reservations, please contact the Office of Parks & Recreation at 732-946-2820, extension 1223.*

### 2011 Holmdel Recreation Summer Day Camp

(Mondays-Fridays starting July 5th and ending August 12th)

K-6th grade at W.R. Satz School (9:15am-12:15pm)

Join your friends for a summer of games, sports, arts & crafts, special events, trips and more! This program is open to Holmdel children who have completed kindergarten or are six years of age by the start of the program up to children who have completed sixth grade. Proof of age (kindergarten only) and residency required. A flyer will be sent home through the schools with program details. Registration begins on Monday, March 28 and ends on Friday, May 27 unless program is filled (dates and fees are subject to change). For more information please check our website or contact the Office of Parks & Recreation 732-946-2820, x 1225 or email recreation@holmdeltownship-nj.com.

## **PARKS AND RECREATION**

### CALENDAR OF PROGRAMS & EVENTS

January~February~March

|                        |   |                      |
|------------------------|---|----------------------|
| • Body Sculpt          | Mondays, Wednesdays, Fridays AM             | Adults               |
| • Senior Workout       | Mondays, Wednesdays, Fridays AM             | Residents 50+        |
| • Yoga AM              | Tuesdays                                    | Adults               |
| • Yoga PM              | Mondays, Thursdays                          | Adults               |
| • Mat Pilates          | Tuesdays PM                                 | Adults               |
| • Men's Basketball     | Tuesdays, Thursdays PM                      | Adults               |
| • Zumba                | Wednesdays PM                               | Adults               |
| • Karate               | Wednesdays, Fridays PM                      | ages 7-70            |
| • Kickboxing           | Thursdays & Saturdays PM                    | Adults               |
| • Senior Cooking Class | Monthly                                     | Residents 50+        |
| • Easter Egg Hunt      | April 9 (rain date April 10th)              | Pre-school-3rd grade |
| • Community Day        | April 30th (rain date May 1st) 11AM:-4:00PM |                      |

**Programs are subject to change (based on participation)**

Year round sport activities for Holmdel Youths ~HYAA-732-817-9222 or HYAA.org

Stallions Traveling Soccer ~ Mike Roth 732-332-1689

Mavericks (Lacrosse) ~ Scott Cort 732-888-3743 or Kevin Gilfillan 732-616-7964

Half Century Club; Activities for Sr. Citizens of Holmdel 50+ ~Toni Brescia 732-264-1002

### TOWNSHIP SWIM CLUB



2011 Swim Club brochures will be available in mid February by visiting the Parks & Recreation Office at Town Hall, checking the Town's website at [www.holmdeltownship-nj.com](http://www.holmdeltownship-nj.com), emailing Parks and Recreation at [recreation@holmdeltownship-nj.com](mailto:recreation@holmdeltownship-nj.com) or writing to the Office of Parks & Recreation, Holmdel Township, PO Box 410, Holmdel, NJ 07733.

For further information, call Parks & Recreation office at 732-946-2820, ext 1225.



### Attention Ball Room Dance Instructors

The Holmdel Parks & Recreation Department is looking for experienced Ball Room Dance Instructors. If you are interested, please call Deborah Dow at 732-946-2820, ext. 1224

### HOLMDEL COMMUNITY DAY & BASEBALL BONANZA PARADE

Saturday, April 30th (rain date Sunday, May 1st)

Parade 10:00 am—Village School / Cross Farm Park 11:00am—4:00pm

**NEW THIS YEAR** ~ HYAA and Holmdel Recreation are pleased to announce that plans are currently under way for combining Community Day with the Baseball Bonanza Parade. The parade will begin at 10:00 am at the Village School and end at Cross Farm Park. Enjoy the afternoon with members of your community! Food vendors will be selling a large variety of food for your enjoyment, and craft vendors will have their new and handmade artwork on display for you to purchase. Children can enjoy the afternoon playing on the FREE rides and socializing with friends and neighbors. Many volunteer opportunities are available. For further information contact the Recreation Office at 732-946-2820, extension 1224.



## RECYCLING



### **SHOPPING BAG INCENTIVE PROGRAM**

#### **GET YOUR REUSABLE SHOPPING BAGS WHILE SUPPLIES LAST**



Bring 20 or more plastic shopping bags to the Clerk's office at Town Hall between the hours of 9:00 am—4:00 pm Monday through Friday. Two reusable shopping bags per residential address will be given in exchange for 20 or more plastic bags.

The plastic bags will be recycled through Goodwill Industries. They recycle them through their "Bag Smart" program. The plastic bags are sorted and baled by Goodwill employees, then transported to Penn Jersey Paper who facilitates their conversion into plastic decking materials.

The shopping bags are being purchased utilizing grant funds supplied by the Department of Environmental Protection. The grant is issued each year to municipalities in New Jersey submitting a tonnage grant application. Money issued is based on the amount of recyclables a municipality recycles.

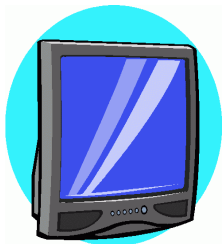
Recycling makes cents for our Town.

### **CHANGES IN COMPUTER & ELECTRONIC RECYCLING**



Effective January 1, 2011 the State banned the disposal of computers, televisions and other "covered devices" from landfills. Homeowners, businesses and institutions may not place these items in the trash, and public or private haulers will be prohibited from picking up these items for disposal.

Holmdel Township has partnered with the County and is now part of their Countywide Electronics Recycling Program. The program's goal is to have sufficient municipal or county managed drop off sites so no resident, small business or institution need travel more than a few miles to recycle their broken or obsolete electronics. The County has entered into a contract with Monmouth Wire & Computer Recycling who will be the contractor disposing of the materials.



Starting March, 2011 our Department of Public Works Department will have containers available on site for the disposal of copiers, scanners, telephones, wires and cables, computers, keyboards, fax machines, VCR/DVD players, televisions, printers, stereos and cameras. Microwaves and air conditioners (window units) will also be accepted.



Although there is no absolute security guarantee on information left on a computer, Monmouth Wire & Computer Recycling does wipe or physically destroy hard drives before sending the materials out for recycling.

Should you not have ability to transport items to our DPW yard, home/business pickup is available for a fee. Please contact Monmouth Computer Recycling at 732-922-3320 for further information.

*Holmdel Township strives to keep disruptions to a minimum. If unsafe weather conditions persist, the Township and recycling contractor will determine if a cancellation of recycling is necessary. Our first priority in determining if a cancellation is needed is the safety of our drivers and of our residents. If you are unsure whether recycling services have been cancelled please visit our website [www.holmdeltownship-nj.com](http://www.holmdeltownship-nj.com) or contact the Recycling Coordinator at 732-946-2820, ext. 1212 for up to date information. In most cases, if cancellation occurs, your recycling will be rescheduled to another day.*



# BOARD OF HEALTH



## DOG LICENSING

Please be advised that annual dog license renewal deadline was January 31st. Dog owners will be charge a late fee of \$5.00 per month for each month their dog is not licensed. Also, if you are licensing by mail, please include a self-addressed stamped envelope when returning the registration/licensing form.

## DOG TAGS

If you paid for a 2011 dog license, and did not send a self-addressed stamped envelope in with your payment, please stop by the Board of Health Office to pick up your dog's tag. The tag should be attached to your dog's collar, as this is used for identification should your dog leave your property. The dog tag number is recorded in our office and in the Police Department, and is very useful in finding who the dog belongs to should it wander away. Make sure that your dog is wearing a current Holmdel Township dog tag (BH:2-8).

## SHADE TREE COMMITTEE

Winter 2009-2010 wreaked a great deal of havoc on our landscape plantings, and presumably the damage created was tended to during the warmer months. Again, Mother Nature is beating our plants up in winter 2010-2011. Fortunately, the big December blizzard, and most of the storms since have only deposited light fluffy snow rather than the more damaging icy and slushy stuff that is a much more destructive scenario.

Assuming that we will continue to receive more snow this season, here are a few suggestions for protecting your plantings. Light snow can be brushed off from shrubs using a broom. Do not bang the tender branches with a stick or shovel as the wood is very brittle while partially or totally frozen and will crack or break. Try not to throw any more snow on plantings when plowing or blowing the driveway or walks. If there are some tender green tips on azaleas, arborvitae, roses, and the like that have been nibbled by the deer or mice or other rodents, pieces of chicken wire can be added as protection.

Once things thaw out, the next step is to take an inventory of your landscaping, and verify the damage. After the breakages have been removed, trees need to be checked for any cracks or stub branches. Stubs need to be cleanly cut off to avoid further damage from rot or bugs. If the tree has sustained serious breakup, consideration to its total removal should be contemplated.

Trees should never be topped as it ruins their natural shape and growth patterns. Topping is a term reserved for the large, nonselective heading of tree branches.

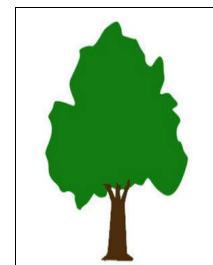
Whenever such a cut is made, hidden dormant buds located directly below the cut end are stimulated and grow into new branches and the tree speeds up its growth rate. The new growth on larger plants is most often skinny, unsightly, straight "water sprouts". If such cuts are made in hopes of reducing a tree or shrub, by the end of the next year, the plant has grown back vigorously and thickly, more than overcoming what was done in the first place. If the species tree was too big in maturity for its location, such pruning will not help.

The bottom line on tree pruning is that it should always maintain or improve the tree's natural beauty, health, and safety. Proper pruning will never increase maintenance by creating water sprouts or deadwood. In sum, one can prune a tree to solve a problem – such as creating access to a path, letting in more light, or decreasing limb breakage – or just to improve the looks of the tree itself. Trees should look like trees and not like green meatballs or Lego constructions.

If shrubs need to be replaced, try to pick species that are less likely to be eaten by the deer. For suggestions, check the Rutgers web site at [www.njaes.rutgers.edu/deerresistance](http://www.njaes.rutgers.edu/deerresistance).

Jenni Blumenthal  
on behalf of the

Shade Tree Committee



## HOLMDEL HISTORICAL SOCIETY IS PLEASED TO ANNOUNCE.....

On January 19, 2011, the National Parks Service of the US Department of the Interior placed Dr. Robert W. Cook's Medical Office on the National Register of Historic Places!

Built in 1823, Dr. Cooke's office is owned and maintained by the Holmdel Historical Society, which offers tours by appointment. The historic building is located at 67 McCampbell Road on Village School property.

Dr. Cooke's office is the 7th property in Holmdel to be added to the NJ State and the National Register and the first since 1989. A bronze plaque indicating the historic designation is in the works.

For more information visit [www.holmdelhistory.org](http://www.holmdelhistory.org).



*Dr. Robert W. Cook's Medical Office*

**BAYONET FARM ARTS & MUSIC FESTIVAL  
NEEDS VOLUNTEERS**

**JOIN IN THE FUN!** The committee planning the 8th Annual Bayonet Farm Arts and Music Festival is just starting to hold meetings and would love to have new members to help with the coordination. This exciting event will be held on September 25, 2011 at Bayonet Farm. The festival includes a juried art show, a Plein Air paint out, performances by local musicians, dancers and actors, demonstrations of raku, pottery wheel, and lots of hands on activities for children (and adults as well). Our next meeting will be on March 27th at 7:00pm at the Community Center. Just come to the meeting, or if you have questions contact Phyllis Ameduri, [PBameduri@aol.com](mailto:PBameduri@aol.com), 732-332-1112 or Sede Spang, [atspang@comcast.net](mailto:atspang@comcast.net), 732-671-9196.

### **A MESSAGE FROM....HOLMDEL TOWNSHIP'S ENVIRONMENTAL COMMISSION**

Living through these challenging snow storms has resulted in us becoming more aware of the environment and the impact we have on it.

This year's Holmdel Environmental Commission is planning on mapping all the trails in town as soon as the weather allows, thus making them more available to residents. We plan to make these trail maps available on the Town's website through Google Maps. Holmdel has so many beautiful open spaces and trails that so few know about. Recently we have had two Eagle Scout projects come before us seeking approval to make improvements to our trail system.

Also, as an advisory board to the Township Committee, we have begun to explore ways to restore and preserve our local watersheds. For additional information on the trails and methods to reduce the impact of storm-water runoffs on our watershed, please attend one of our meetings held on the third Wednesday of each month. We can be reached at [psoscia@holmdeltownship-nj.com](mailto:psoscia@holmdeltownship-nj.com) or (732) 946-2820, extension 1341.

## **HOLMDEL ALLIANCE TO PREVENT ALCOHOLISM AND DRUG ABUSE**

**TO ALL CONCERNED PARENTS, TEACHERS AND COMMUNITY MEMBERS  
A MUST SEE DOCUMENTARY FOR ALL  
APRIL 12, 2011 at 7:00 PM ~ HOLMDEL HIGH SCHOOL AUDITORIUM**

The Holmdel Alliance is proud to present to our community a screening of the film "Race to Nowhere: The Dark Side of America's Achievement Culture." This is a new documentary about the pressures faced by American school children and their teachers in our achievement obsessed public and private education system and culture.

"An education film that gets it" – Washington Post "Must see film" – N Y Times  
"You'll be inspired to make some changes, big and small, for the health of your kids" - Oprah.com

**Race to Nowhere puts a spotlight on the emotional lives of today's children.** It gives voice to teachers who are burned out from having to teach to the test. It shows us college-bound teen-agers being pushed (or pushing themselves) to be super-teens: They attend class for seven hours, then do a sport, language, club, and/or volunteer service. And then they go home to homework, which might take another 5 hours. The film listens to university students' stories about how cramming, cheating, and drug use got them into college. It shows us parents stressing over homework, over college entrance exams, over their child's dislike of school or failing emotional health.



### **RACE TO NOWHERE (SHORT SYNOPSIS)**

A concerned mother turned filmmaker aims her camera at the culture of hollow achievement and pressure to perform that has invaded America's schools. It is destroying our children's love of learning and feeding an epidemic of unprepared, disengaged, and unhealthy students. This remarkable new film shines a light on the price our kids pay for this "race to nowhere." Cheating is commonplace, stress-related illness, depression and burnout are rampant, and ironically, young people arrive at college and the workplace unprepared and uninspired. Featuring the heart-breaking stories of young people who have been pushed to the brink and educators who are burned out and worried that students aren't developing the skills needed for the global economy, **RACE TO NOWHERE** points to the silent epidemic running rampant in our schools.

**RACE TO NOWHERE** is a call to families, educators, experts and policy makers to examine current assumptions on how to best prepare the youth of America to become the healthy, bright, contributing and leading citizens in the 21<sup>st</sup> century.

Tickets prices are: \$10.00 in advance or \$15.00 at the door - Tickets are available at:  
<http://rtnholmdelhs.eventbrite.com/>

Any questions: contact Barbara Hilliard, Alliance Coordinator 732-946-4330 ext 1214 or email at:  
[bhilliard51@comcast.net](mailto:bhilliard51@comcast.net)

For additional film information: [www.racetonowhere.com](http://www.racetonowhere.com)

## THE 2011 TOWNSHIP COMMITTEE

Mayor Patrick Impreveduto  
 Deputy Mayor Serena DiMaso  
 Committeeman Larry Fink  
 Committeeman Eric Hinds  
 Committeeman Rocco Pascucci

*To contact any of the Governing Body members if you have questions or comments about anything going on in Town you may call the Township Clerk at 732-946-2820, extension 1211 or email [info@holmdeltownship-nj.com](mailto:info@holmdeltownship-nj.com).*

### Holmdel Township Municipal Offices

PO Box 410

Holmdel, NJ 07733

Business hours 9:00 am to 4:30 pm, Mon-Fri.

**Board of Health, Construction Department,  
 Planning/Zoning & Tax Assessor offices have  
 hours from 9:00 am until 7:00 pm on Mondays**

### Holmdel Library Hours:

Mondays: 1:00pm–9:00pm

Tuesdays: 9:00am–5:00pm

Wednesdays: 1:00pm–9:00pm

Thursdays: 9:00am–5:00pm

Fridays: 1:00pm–5:00pm

Saturdays: 9:00am–5:00pm

(July & August/Saturdays 9:00am–1:00 pm)



To better communicate with you, sign up for the Township's Code Red Communications System in order to receive emergency alerts and public announcements. Your contact information will remain private and will only be used for this purpose. You may sign up by visiting our website [www.holmdeltownship-nj.com](http://www.holmdeltownship-nj.com).

### STAFF DIRECTORY

The staff of Holmdel Township is here to assist the public whenever possible. Please use the following list of extensions when dialing 732-946-2820 to contact a municipal staff member or department.

|            |                                   |
|------------|-----------------------------------|
| 1204       | Administration                    |
| 1501       | Board of Health                   |
| 1303, 1305 | Building Inspections/Construction |
| 1604       | Court Clerk                       |
| 1204       | Code Enforcement                  |
| 1953       | Dept. of Public Works             |
| 1341       | Environmental Commission          |
| 1315       | Fire Prevention                   |
| 1212       | Mayor/Township Committee          |
| 1225       | Parks & Recreation                |
| 1322       | Planning Board                    |
| 1212       | Recycling                         |
| 1411       | Sewer                             |
| 1341       | Shade Tree Committee              |
| 1432       | Tax Assessor                      |
| 1423       | Tax Collector                     |
| 1211       | Township Clerk                    |
| 1323       | Zoning Board                      |
| 1315       | Zoning Officer                    |

### OTHER NUMBERS:

Holmdel Board of Education 732-946-8686

Holmdel Library 732- 946-4118

Holmdel Post Office 732-946-4710

Police Department (non-emergency) 732-946-9690